

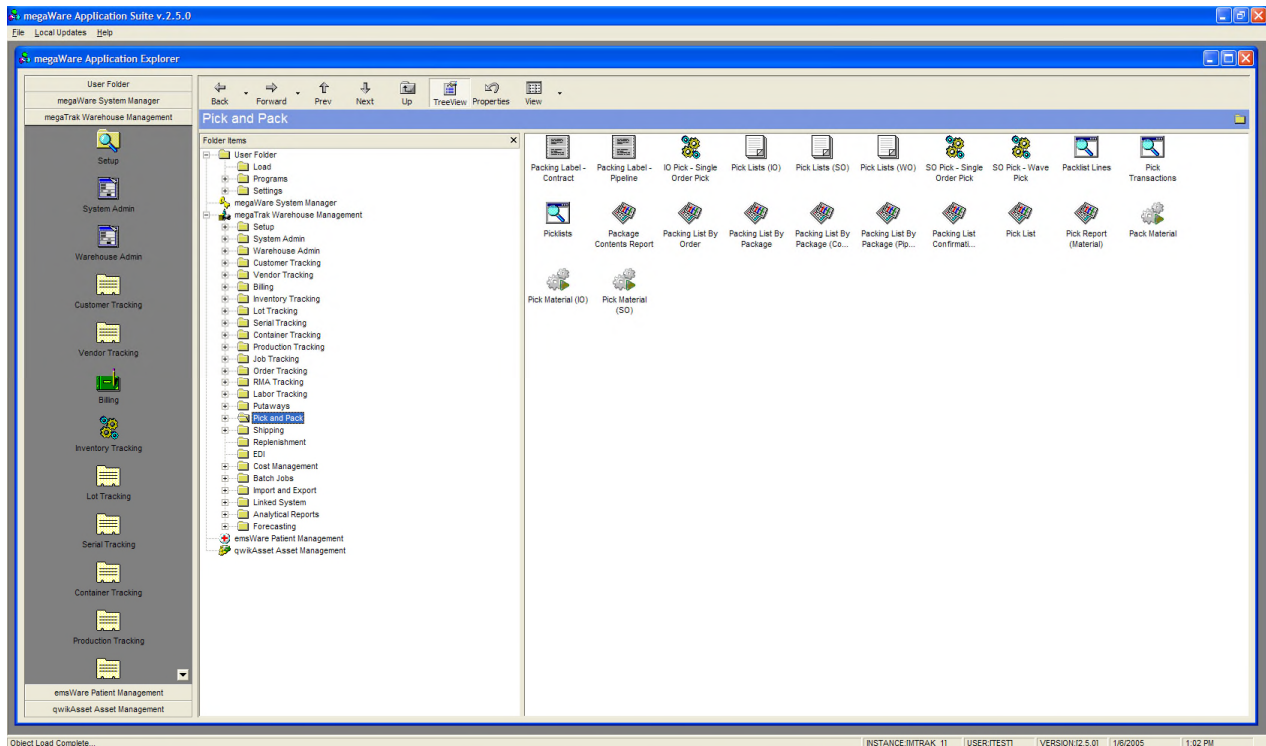
megaTrak™ Warehouse Management

Warehouse Management

megaTrak™ is a comprehensive Warehouse Management System (WMS) created by Csoft Corporation. megaTrak™ provides rich and powerful functionality for streamlining, managing, and generally improving warehouse operations as well as reducing inventory stocking and handling costs. megaTrak™ is designed to help the warehouse personnel (as well as management) more efficiently manage inventory, inventory levels and costs, warehouse labor, picking and material handling operations, while improving overall inventory accuracy. megaTrak™ also provides several choices in reporting, including a thin-client engine using the web browser. megaTrak™ is a highly automated system that strives to keep keystrokes to a minimum and “double-entry” eliminated.

megaTrak™ is the most configurable and flexible WMS product currently on the market with over 150 configuration tables and 2000 configuration parameters. Because every company does warehouse management and materials management a little differently we have taken the unique approach of allowing extreme flexibility through changing of configuration parameters vs. handling all customization through programming. The megaWare™ Application Engine does support custom scripting where needed, so if custom programming is necessary to meet customer requirements, it can be accomplished by using VBScript and/or Jscript.

megaTrak™ is built on the technology of the megaWare™ Application Engine, which will also include megaFreight™ (UPS/Fedex/LTL/Large Carriers,) in Q4, 2008.



megaTrak™ Features

- Tracks materials, lots, serials, multi-level locations, material statuses, multi-warehouse/plant, consignment locations, customers, vendors, orders, interplant orders, containers, etc.
- Fully supported basic transaction set: Receipts, shipments, material transfers, interplant/inter-warehouse transfers, adjustments, physical inventory and cycle-counts.
- Configurable Cycle counts by ABC Classification, Item and Location. Cycle counts can be scheduled and statistics are kept for each cycle count.
- Tool tracking accomplished through check-in and check-out transactions -- for assets, lots, and items/materials.
- Fully configurable, customizable, optimized picking, packing and shipping.
- User configurable rules for putaways and replenishment.
- Lot, material and serial tracking. Lots can be tracked as a single item, or can contain multiple material and serialized items. Full serial/lot history is available through the query manager.
- Lot splitting, moving, and merging.
- Cross-docking and back order management.
- Full container tracking with container contents.
- Light assembly functions: Assemblies, route tracking, multi-level BOMS, kits, serialized kits, operations, workstations, labor, etc. Goods can be tracked from work order to BOM to a finished good.
- RMA processing with RMA documents, RMA receipts and shipments.
- Complete transaction log of processed transactions that include all transaction information with date and time stamps as well as a transaction audit/error log.
- Scheduling section for doing light DRP (Distribution Resource Planning), which helps managers and buyers understand what items need to be available to fulfill orders.
- Consignment and Demand-Pull processing.
- Integrated with SYSPRO via the e.net solutions framework.
- Inventory reduction reports such as Days of Inventory, Excess Inventory and Excess Inventory to Target.
- Over 70 standard reports and 30 standard queries included.
- Radio Frequency (RF/Real-Time), RFID and batch terminals supported.
- RFID Card swiping (for labor) and tag reading supported at both the product and pallet level.
- Windows Mobile, Windows CE.NET, Windows CE and Pocket PC devices supported for querying and transaction entry.
- Scale integration (Toledo, etc.) through the use of RS-232 ports and 802.11b/g.
- Web / thin-client access for internal, vendor, and customer querying as well as order entry and tracking.
- Barcode label printing using popular printing software and thermal transfer printers. Labels are made in these design packages and megaWare utilizes the label formats to print on demand (or automatically after a transaction).
- UPS WorldShip and FedEx systems can be linked to megaTrak™. For our full shipping version that includes rate tables, LTL shipping and more robust freight control, inquire about megaFreight™, our full Freight Management System.
- Auto-Bill of Lading creation as well as Bill of Lading entry forms.
- Scaled down versions for tool tracking, stock-room tracking, basic bin tracking, etc...
- Transportation, shipping, and route planning available in Q2, 2008.
- Contract management and auto-warehouse service billing for warehouses involved in the warehouse business and Intermodal operations.

megaWare™ Application Engine Features

- Supports four database back-ends (not ODBC): Microsoft Access, Microsoft SQL Express, Microsoft SQL Server 2000, and Microsoft SQL Server 2005. Database back-ends can be changed with a simple upgrade and data transfer utility...with no change in programming!!
- Configurable query engine for quick viewing, printing, and exporting data. Standard queries can be easily customized and modified as well providing capability to build new queries to meet specific customer needs.
- Configurable report writing through Business Objects Crystal Reports. Standard reports can be easily modified and new reports created as needed.
- Configurable import and export capabilities that can be scheduled, if the scheduler option is purchased.
- Label configuring and thermal-transfer printing supports: BarTender, LabelMatrix, Loftware, LabelView, LabelVision, and Bar-One. All printers supported by these packages are supported by megaWare™ applications.
- Custom actions and scripting can be attached to forms and objects through our own macro language, as well as Jscript and VBScript.
- Custom batch jobs can be configured and executed through the megaTrak™ batch scheduler.

Platform Scalability

As stated above, the megaWare™ engine supports six different back-end database management systems. megaWare™ uses the latest in object technology (ADO/ADO.NET) to access each database platform, and does not use ODBC for data updates or processing. Each platform is an upgrade in speed and scalability...megaWare's™ supported DBMS platforms are as follows:

- Microsoft Access
- Microsoft SQL Express
- Microsoft SQL Server 2000
- Microsoft SQL Server 2005

Because the megaWare™ engine supports multiple database platforms, the application can grow with your business and data processing needs. Access to each backend database platform is already included in the application code, so upgrading is as simple as copying the data from one platform to another (using our data transfer utility) and changing a registry setting on the client. This allows customers to leverage their training and IT investment by staying with the same application as it scales to meet your needs.

Architecture Flexibility

The megaWare™ engine is written in Microsoft .NET 2005 as well as some COM/ActiveX, Microsoft's Component architecture. This allows the inclusion/exclusion, upgrading, and customization of individual objects within the system. Basically, each object within the system is a .NET "Managed Code" assembly or a COM ActiveX DLL, with its own configuration and settings. This allows the system to be customized to meet each user's / department needs from a functionality perspective. It also allows the inclusion of megaWare™ objects into other applications or custom scripts.

Application “Configurability“

megaTrak™ is the most configurable WMS currently on the market because it is built on the megaWare™ Application Engine technology, which is our Vertical Software Engine (VSE™) technology. There are two types of configurability within the system: Application Configurability and Business Rule Configurability. Application Configurability allows the changing of how the application works and Business Configurability allows the changing of the business rules within the system. There are over 200 tables and 2500 configuration fields included in the configuration database that controls the how the application works and how the business rules are applied. Normally, the vendor is responsible for these and all other changes made to the application, but with VSE™, customers can learn to do their own configuration additions, changes and updates. This lowers the “Total Cost of Ownership” for customers who can learn the configuration tool and apply it to the application.

Application Security

The megaWare™ engine supports group and individual user security, as well as allowing customer and vendor logons for consignment configurations. Application security is 3-tier:

- Database-level security with password protection and table / view permissions.
- Application group and user-level security that allows assignment of groups and roles.
- Data-level security that allows customers and vendors to only view their data.

The VSE Advantage ©

The VSE (Vertical Software Engine) provides advantages that no other Warehouse Management System can offer: configuration ability at the application level, configuration ability the business rule level and configuration ability the interface level. Every one of megaTrak’s forms, queries, reports, labels, jobs, data links to outside systems etc. are configurable and extensible through the VSE technology offered by Csoft. This has advantage over traditional forms of “configurable” software that uses source code to make enhancements as we do all of our updates through a configuration tool. We’ve taken 10 years of industry experience in distribution, inventory control and warehouse management and built this real-world experience into the VSE™ technology. This means that installations that take 9-12 months (minimum) to make source code adjustments are no longer necessary.

In addition, these traditional types of source code systems typically use older technology and are “version locked” with the current version that has been purchased. To stay current all the customization updates made to the software have to be continually re-applied to later source (if the vendor even provides updates), which typically run into conflicts when the vendor makes updates to the very same areas that were customized. In addition, “fixed parameter” systems only offer configuration ability in what the software company deems as important vs. offering the ability to “configure the configuration”. In other words, our customers use VSE™ to create new forms, queries, reports, labels, jobs, data links, business rules, etc. not included in the original package...and do so without changing source code! Of course, we at Csoft are constantly striving to make the engine better and when we do so for one of our clients, all clients benefit who are signed up in our maintenance program.

That is the VSE Advantage ©...supreme configuration power that provides ultimate flexibility, scalability and ability to shift with your evolving business needs.